

# THE FLYER



Middlesex County  
R-C Fliers, Inc.

November 2011



## Wheeler Class RC Sailboats.

National Regatta for Wheeler class sail boats on Lake Quinsigamond (near Worcester, MA) Photo from The Foghorn, Newsletter of the Marine Modelers Club of New England. See article on pg. 5 for more info.

## From your Newsletter Editor, *by Jim Orsborn*

Join us for the Monthly club meeting this coming Wednesday, the 9th at the Rec Center.

Show and Tell items are always welcome.

By popular demand, the Clip Art suggestion contest is open again this month.

Bring a clip art photo of something that you think would make a good raffle or Holiday Party drawing and receive a ticket for the monthly drawing.

Check out Bob Forgione's article on how to add "real" joysticks to

your basic Flight Simulator box.

Everyone knows about Tuesday Training night; but have you heard about Warbird Wednesday? See the Notes from the Field article for more info.

So much for Fall. I guess Winter has arrived earlier than

expected. Four full days without power has convinced me that I want nothing to do with field trips or overnight camping.

Here's to Indian Summer and an early Spring.

### Inside this issue:

From your Newsletter Editor, <i>by Jim Orsborn</i>	1
Improved Joysticks <i>by Bob Forgione</i>	2
Notes From the Field (Oct Club Meeting)	4
Cover Photo Story	5
Officers and Directors	BC

## Improved Joysticks by Bob Forgione

Hi everyone. How happy are you with the stick response on your Real Flight Basic Simulator? Well if you're happy then read no further. Also, if you have the simulator that you can use your own transmitter, no need to read on either.

However, if you want a better response and reliability of your basic simulator read on.

Do you have a old, 4 channel Futaba transmitter lying around doing nothing?

My Real Flight was very erratic and exhibited "whiplash" on the right control stick in Mode 2. When you gave it left stick on the aileron control the plane would whip down to the left and require a quick response correction and it would be erratic and there is nothing like that in real flying. I called Great Planes and they would fix it but it would take about 8 weeks.

So here is the solution. Get out the snips and detach the wires leading from the circuit board to the joysticks. (Oh No!) I would do one stick at a time. You must do both sticks for circuit balance.

Now take the back off your old Futaba. Note that the joystick mechanical screws are located in the same place as in the simulator and the housings are the same size. The pots on the Futaba are larger and have a great deal more resolution for the trim and fit in the simulator housing.

Look for the wires connecting to the pot and snip those. Leave enough wire to hook to the RealFlite Basic control box circuit board.

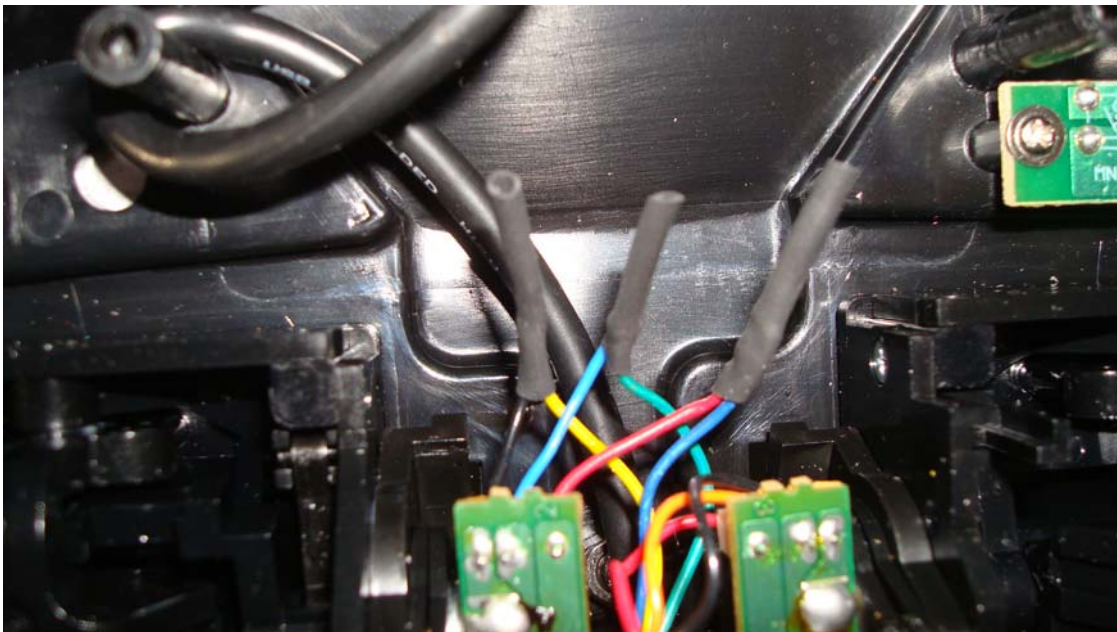
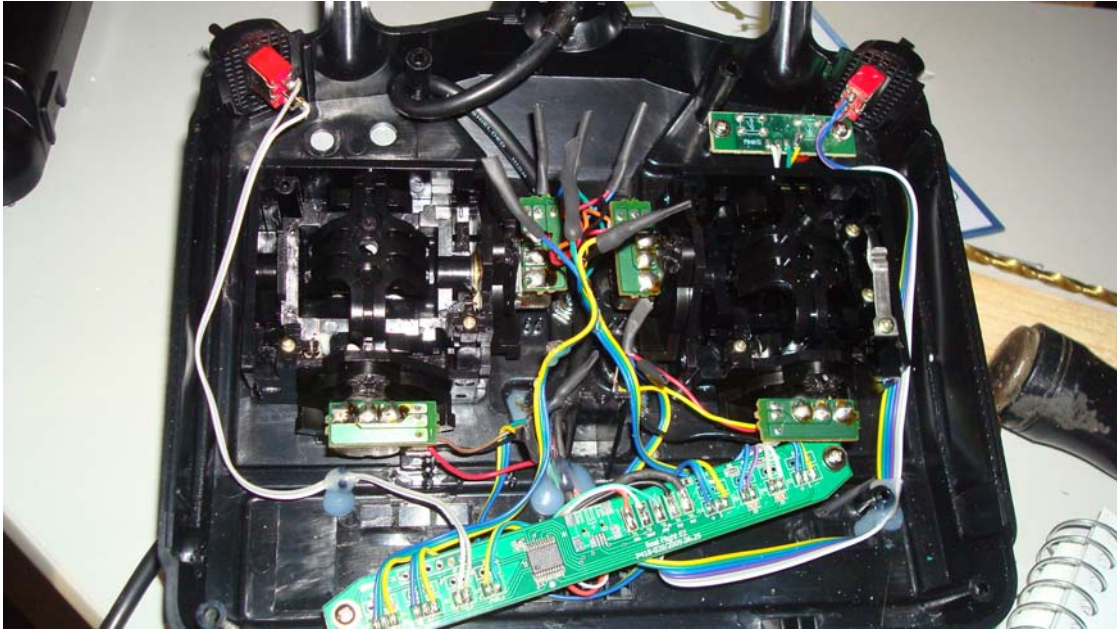
Mount the Futaba joy sticks to the simulator case with the screws from the Futaba. Strip and connect wires as follows; Note that the pots are marked with control #.

NOTE: The markings on the simulator circuit board for the Ail-Elev are not clear. So make sure the From-To are going to the correct Futaba pot.

FROM:		TO:
Futaba Radio		Simulator Ckt Board
<u>Pot # 1</u>	Black	Yellow
	Brown	Green
	Red	Blue
<u>Pot # 2</u>	Black	Yellow
	Red	Blue
	Blue	Green
<u>Pot # 3</u>	Black	Yellow (Throttle)
	Orange	Green
	Red	Blue
<u>Pot # 4</u>	Black	Yellow (Rudder)
	Red	Blue
	Yellow	Green

I would solder the wires together and place shrink tubing over the connected wires. The wires can accept the tubing after soldering by pinching the connection and sliding the tubing over the soldered connection and some of the insulated wire to be sure all the joint is covered. Then use the heat gun to complete the joint insulation.

Screw the case back together and get ready for some improved response from the simulator.



#### Photos 1 and 2:

The top photo shows the inside of the Simulator case after the modification is complete. The case is ready to go back together. The second photo is a close-up of the heat shrink tubing installation.

With the wires tucked in and the case closed, get ready for a new feel and improved response when using your Real-Flight Basic simulator.

## Notes From the Field *by Jim Orsborn*

### October Meeting Notes

President, Jerry Crowley, opened the August meeting at 7:35 PM with 20 members in attendance.

We have a new father (Bill) / son (Charles) membership, so Ray tells us that the current membership is at 65.

Jeff offered the following details about our club treasury status.

July 31 Bal.	\$5,590
Aug 31 Bal.	\$4,887
Sept 30 Bal.	\$4,296

Recent expenses have included monthly raffles, field maintenance, and events.

### Old Business

Jeff reported that Yankee Doodle was well attended. Great weather lead to us using a full gallon of fuel to take up a steady stream of potential fliers. Two planes were used. Takeoffs needed full power, but landings were real short due to the long grass.

Fly-in on Sun. Oct. 16th.  
Basic plan is to start at 9:30 and order pizza around noon. No special events, just an early Fall flying date.

### New Business

Elections are coming. Dan Costa and Paul Sullivan have volunteered to poll the membership for volunteers. Look for more details to follow.

Warbird Wednesday. Dan and Paul announced that they have been holding Warbird Wednesday and would like to invite other pilots.

Holiday Party. As reported earlier, the date has been set for Jan. 14th. Consensus is to use the same location and the Jan date.

Club Auction. Yes it is scheduled for January 29th. Need volunteers and will be holding a planning meeting soon. Jeff, Don and Jerry are leading the charge, so see one of them if you would like to volunteer.

Clip Art Contest. Okay, so here is your chance to try again. Popular demand and a vote confirmed that the contest should be repeated again this coming month.

### Monthly Raffle Winners.

Dan Costa won a gallon of fuel and Adam Harte won a field charger.

### Rambling Thoughts

Club rules clearly state that intentional flying behind the flight line, over an occupied parking lot, or an active event in another part of Veteran's Field Park is **STRICTLY PROHIBITED.**

During the last meeting, someone told me that the E-Flight Advance 25E is a really nice model to look at as a first electric powered, sport aerobatic. So here is what I've found on the Web: Advance 25e by E-flight 4 channels, 510 Sq. In., semi-symmetrical wing, tri-cycle gear, Power 25 or 32 brushless Outrunner, balsa & plywood with UltraCoat cover.



## Cover Photo Story *by Jim Orsborn*

Who says that other modelers can't have as much fun as we do flying planes? The following extract is from The Foghorn, which is the newsletter of the Marine Modelers Club of New England.

We sailed 15 races during the 2 days in extremely windy weather. The wind blew a steady 18 knots and had very regular gusts over 30 knots. We started with 14 boats and ended the 2nd day with 3 boats sailing at the Regatta end.

Wheelers sailed at 6 knots and surfed down wind at 8-9 knots. Collisions occurred often and caused serious damage often forcing the boat out of racing. Hulls collided hard enough to crack both fiber glass hulls. 80 Lbs Sheet lines snapped like sewing thread. Threaded stainless fittings were stressed enough to strip the threads out pulling pieces apart. Stainless steel spreaders were broken like toothpicks. 9' carbon fiber masts were twisted apart. Bolted Boom fittings were ripped through the carbon fiber mast and lost overboard.

All in all it was a great series of sail races to watch. None of that watch the grass grow in this series! It was EXCITING but sad for the boat owners. These are expensive big boats, running in the \$2000 range. 2 guys flew out from California to endure the breakage. Just think \$600 in crating and freight plus your ticket to watch the boat self destruct!

## Club Activities and Events

Christmas is coming. Remember that this is confirmation that we've passed the shortest day of the year (Dec. 22nd) and Spring is coming.

### Jan 14th — Holiday Party

Best party of the year. Plans are to follow tradition; same place, same menu, great drawings.

### Jan 29th — Club Auction

Great fundraiser for the club; helps us keep the grass cut and not raise the annual dues.

### Super Bowl — Early Feb

**Official Publication of the Middlesex County R-C Fliers, Inc.**

**The FLYER** is the official publication of the Middlesex County R-C Fliers, Inc., a non-profit organization chartered for the promotion of radio controlled model aircraft building and flying. The club operates a flying field located on Treble Cove Road, Billerica, MA. The club offers free flight instruction to any member provided they have a current membership with the Academy of Model Aeronautics. Contact any club member for details. Meetings are held on the second Wednesday of every month between September and June in the Billerica Recreation Dept building at 248 Boston Road in Billerica, starting at 7:30 PM.

**Club Officers:**

**President**

Jerry Crowley  
75 Judith E. Drive  
Tewksbury, MA 01876  
978-851-2057  
Gerald.Crowley@comcast.net

**Vice President**

Robert Forgione  
98 Locust Street  
Burlington, MA  
781-272-4510  
RPForgione@gmail.com

**Registrar/Secretary**

Raymond Capobianco  
28 Griffen Drive  
Wakefield, MA 01880  
781-944-6056  
Raymond@capobiancofamily.com

**Treasurer**

Jeff Ward  
4 Eastview Avenue  
Billerica, MA 01821  
978-663-4493  
jeff@mcrf.org

**Director**

Charlie Bacon  
15 Tanglewood Drive  
Chelmsford, MA 01824  
978-376-7187  
chazbacon@comcast.net

**Director**

Daniel Fisher  
9 Village View Road  
Chelmsford, MA 01824  
978-256-3085  
danfj@aol.com

**Director**

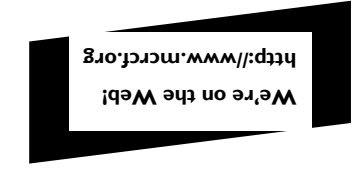
Dave Varrell  
24 Matthew Road  
Billerica, MA 01821  
978-362-3812  
d.varrell@comcast.net

**Newsletter Editor**

Jim Orsborn  
43 Charme Road  
Billerica, MA 01821  
978-667-4510  
jto@mitre.org

**Nov. 9th, 2011**  
7:30 PM  
Lewis Building  
248 Boston Road (Rt 3A)  
Billerica, MA

**First Class Mail**



MCRCF Registrar/Secretary  
28 Griffen Drive  
Wakefield, MA 01880

